

O'AHU COUNTY DEMOCRATS

OF THE
DEMOCRATIC PARTY OF HAWAII

a gathering place for political action

CONGRATULATIONS

A big congratulations to all of our Democratic candidates who won their races in last month's Primary Election and mahalo to all candidates who stepped up to be on the ballot to represent our communities across O'ahu!

As we move full steam ahead to the General Election on November 8, 2022, support Democrats in your community and consider lending a hand to their campaigns (see info on volunteering on Page 2). Below are the candidates appearing on the General Election ballot.

Governor & LG

Governor - Josh Green
Lieutenant Governor - Sylvia Luke

Federal Offices

U.S. Senate - Brian Schatz Congressional D1 - Ed Case
Congressional D2 - Jill Tokuda

State Senate

District 9 - Stanley Chang
District 10 - Les Ihara
District 11 - Carol Fukunaga
District 12 - Sharon Moriwaki
District 13 - Karl Rhoads
District 14 - Donna Mercado Kim
District 15 - Glenn Wakai
District 16 - Brandon Elefante
District 17 - Donovan Dela Cruz
District 18 - Michelle Kidani
District 21 - Mike Gabbard
District 22 - Maile Shimabukuro
District 23 - Gil Riviere
District 24 - Jarrett Keohokalole
District 25 - Chris Lee

State House of Representatives

District 19 - Mark Jun Hashem	District 37 - Ryan Yamane
District 20 - Bert Kobayashi	District 38 - Marilyn Lee
District 21 - Jackson Sayama	District 39 - Corey Rosenlee
District 22 - Andrew Garrett	District 40 - Rose Martinez
District 24 - Adrian Tam	District 41 - Matt LoPresti
District 25 - Scott Saiki	District 42 - Sharon Har
District 26 - Della Au Belatti	District 43 - Stacelynn Eli
District 27 - Jenna Takenouchi	District 44 - Darius Kila
District 28 - Daniel Holt	District 45 - Cedric Gates
District 29 - John Mizuno	District 46 - Amy Perruso
District 30 - Sonny Ganaden	District 47 - Sean Quinlan
District 31 - Micah Aiu	District 48 - Lisa Kitagawa
District 32 - Gregg Takayama	District 49 - Scot Matayoshi
District 35 - Cory Chun	District 50 - Natalia Hussey-Burdick
District 36 - Rachele Lamosao	District 51 - Lisa Marten

Honolulu City Council

District 2 - Matt Weyer
District 4 - Tommy Waters

District 6 - Tyler Dos Santos-Tam
District 8 - Ron Menor

HELP DEMOCRATIC CANDIDATES IN THE GENERAL ELECTION

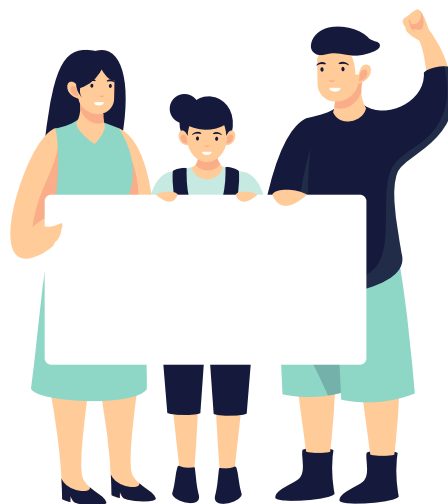
The Membership Committee of the OCC seeks volunteers to aid the coordinated statewide campaign to elect Democrats. We ask you to volunteer and help defend and enhance our Democratic values statewide for our 'ohana and others.

If you would like to assist by making phone calls, recruiting volunteers, sign waving, or with literature drops, please volunteer NOW!

Please complete the volunteer form to sign up.

**Click here
to fill out form**

The OCC Membership Committee appreciates your immediate action. Call or text Chris Edwards at (203) 247-6051 to get involved NOW.



SEPTEMBER 20 IS VOTER REGISTRATION DAY

Participate in National Voter Registration Day on September 20, 2022 by spreading awareness about voter registration to friends and family or double checking that your own voter registration is up to date



Office of Elections
(808) 453 - 8683
elections.hawaii.gov

Who can register to vote?

Anyone who is:

- A U.S. citizen
- A resident of Hawaii
- 16 years old or older (pre-register and you will be automatically registered at 18)

How to register to vote?

- Fill out a paper application and mail it in
- Use the online form at elections.hawaii.gov
- Just checking your registration? Go online or call (808) 453 -8683

To check your district or update your voter registration, visit the Office of Elections website at elections.hawaii.gov



LEGISLATIVE PRIORITY MEETINGS: WHAT ARE 'OAHU'S KEY ISSUES FOR 2023?

Thank you to everyone who took this year's Legislative Priority Survey to rank the issues that are the most important to you and your community. Next up, each region will be hosting a meeting to further discuss the top-ranked topics and the changes they would like to see happen in the coming year. The Legislation Committee will compile the results of the survey and meetings to create a report that will be given to legislators to help them represent the needs of O'ahu Democrats in the upcoming legislative session.

All meetings will be conducted via Zoom. For more information on the meetings or if you need help getting online, contact your Region Chair (listed in right sidebar).



MEETING DATES - Zoom Registration Required

Region 1 - September 15 6 p.m. - [Click here to register](#)
Region 2 - September 27, 6 p.m. - [Click here to register](#)
Region 3 - September 17, 10 a.m. - [Click here to register](#)
Region 4 - October 25, 6 p.m. - [Click here to register](#)
Region 5 - October 25, 6 p.m. - [Click here to register](#)
Region 6 - October 20, 6 p.m. - [Click here to register](#)
Region 7 - September 22, 6 p.m. - [Click here to register](#)
Region 8 - October 27, 6 p.m. - [Click here to register](#)
Region 9 - October 15, 10 a.m. - [Click here to register](#)
Region 10 - October 20, 6 p.m. - [Click here to register](#)

SAVE THE DATE AND PARTICIPATE IN BIENNIAL DISTRICT ELECTIONS

All districts will be **electing new District Councils and County Convention At-Large Delegates** on October 12, 2022 at 6 p.m. (locations TBD).

The newly created District Councils will consist of:

- **District Chair**
- **District Vice Chair**
- **Secretary**
- **Treasurer**
- **Directors (11 positions)**

District Council Directors will be elected in place of precinct officers.
[To learn more about updated positions and election process, click here.](#)



October 12, 6 p.m.



Sprint to the finish for a Democratic win!

We can help in these key states to keep the Senate blue
NC, PA, WI, AZ - These voters will get their absentee ballots this month!

VOTER REGISTRATION POSTCARDS: Thousands have already been sent. Last batch goes out this month. Contact Davy Strand dnstrand@gmail.com to register Democrats.

TEXT TO KEEP THE SENATE BLUE: We will train you & get you going to turn out the vote in key states like PA, WI, NC, AZ. Contact Keith Richmond IndWind808@gmail.com or Larry Smith larrysmith808@gmail.com

PHONE WITH FRIENDS: Phone to Ohio with Tom and friends to recruit poll workers & poll watchers to combat voter suppression. Contact Tom Helper tomrepleh@gmail.com

If you're not into phoning, texting or writing postcards, please donate!

<https://secure.actblue.com/donate/oahu-county-democrats-1>





What would you like to see? More interviews?
Discussion of issues? Community resources or info?

This project is a constantly evolving work-in-progress.
If you'd like us to cover specific content, please let us
know by email to oahudemsg@gmail.com or [click here](#)
for an anonymous feedback form.

Before You Go ...

We want to stay connected with you!

Whether you can volunteer your time,
donate funds that allow us to sponsor
events or just help us by sharing
content with others, please take a
minute to check out how you can get
involved with O'ahu Democrats.

More information available at
www.oahudemocrats.org

**Join the Democratic
Party of Hawai'i**

Volunteer

Donate



OahuDemocrats



OahuDemocrats



OahuDemocrats



**Oahu County
Committee - DPH**

PAID FOR BY THE O'AHU COUNTY DEMOCRATS, PO BOX 1793, HONOLULU, HI 96806 NOTICE: This solicitation is made on behalf of the Democratic Party of Hawai'i (DPH) - O'AHU COUNTY COMMITTEE for its non-federal fund. State law requires us to use our best efforts to obtain and report the name, mailing address, occupation and employer of individuals whose contributions aggregate in excess of \$100 for the election cycle. Contributions from individuals and entities to the non-federal fund are limited to \$25,000 per election cycle, combined to the state, county, and local Party committees. Contributions from foreign nationals and contributions made in the name of another are prohibited. Contributions are not tax deductible.