

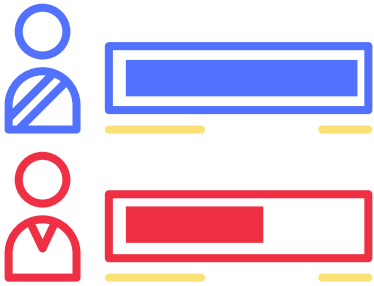
# O'AHU COUNTY DEMOCRATS

OF THE  
DEMOCRATIC PARTY OF HAWAII'

*a gathering place for political action*

## How Hawai'i Voted: A Look at Evolving Political Landscapes

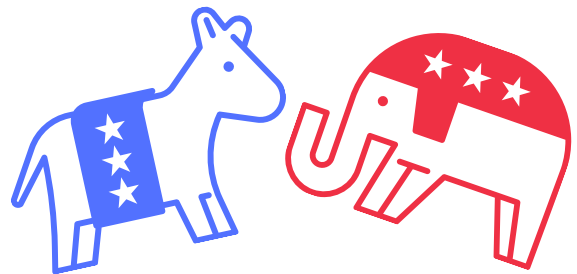
Accessibility for voter registration and voting has made significant strides forward in recent years. 2020 marked Hawai'i's historic first year of an all-mail voting system and resulted in voter turnout of 69.6 percent, the highest it's been since 1994. This year the State Legislature passed a bill that will include an option for automatic voter registration on all state ID and driver's license applications. While efforts to help streamline convenient, easy voting for all citizens will hopefully continue to strengthen voter turnout numbers, will this influx of new voters impact our federal, state, and county elections?



Thinking ahead to the upcoming election in 2022, which will see new Congressional, State Senate, House of Representatives, and Honolulu City Council districts, we took a look back and **compared voter demographics in O'ahu House districts between 2016 and 2020**, our most recent presidential elections.

Understanding voters is the first step in supporting Democratic candidates in 2022. O'ahu Democrats compiled data and charts comparing:

- **Voter age**
- **Voter gender**
- **Voter ethnicity** (data limited to likely last name)
- **Likely first-time voters**
- **Democrat and Republican candidate votes**



Some House Districts in 2020 saw a significant percentage of first-time voters participating in the general election. For example, House Districts 22, 30 and 31 saw first-time voters comprising over 20% of the electorate in the general. Also notably, a ratio of 2020 general election voters to total active registered voters, the range of turnout is from a low of 64% (House District 44) to a high of 89% (House District 17).

See how your House District voted in the last two elections as we gear up to keep O'ahu blue in 2022!

Questions? Email [davin.aoyagi@gmail.com](mailto:davin.aoyagi@gmail.com)

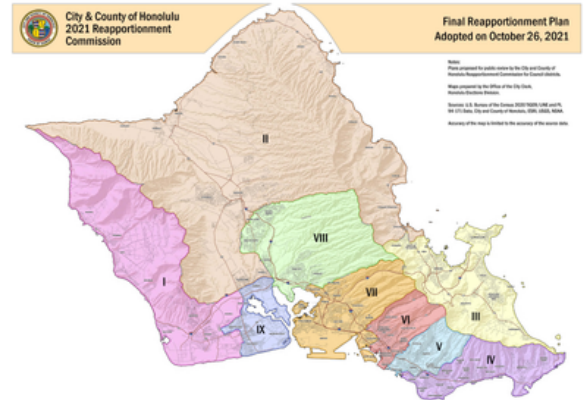
**Click for data by  
House District**

# HEADS UP! CHANGE IS HAPPENING ON O'AHU

No doubt about it, O'ahu is changing. "The gathering place" has witnessed significant population growth and shifts in the past decade, particularly in the central and western parts of our island. As a result, the Honolulu Reapportionment and the Hawai'i Reapportionment Commissions have been hard at work reviewing and configuring 2020 Census blocks into districts for the U.S. House of Representatives, Hawai'i Senate, Hawai'i House of Representatives, and Honolulu City Council.

The **Honolulu Reapportionment Commission** voted on October 26, 2021 and **approved a City Council districts plan**. (See map on right.).

The **Hawai'i Reapportionment Commission**, in its last October 28 meeting, selected a plan for further consideration and will hold hearings over the next two months to gather input on suggested revisions of State Senate and House districts.



*Click map to view a larger version.*

**Your voice matters!** If you have thoughts for or against the changes, if you see a cluster of Census blocks that you believe should be moved, or if you think the plan is right on and should be approved, there is time to **TESTIFY** regarding House and Senate district lines. Testify in writing or via Zoom at hearings in preparation for the next [hearing on December 22](#).

## How to Get Involved

- Visit the Hawai'i Reapportionment Commission website [HERE](#)
- Review proposed plan under "Legislative Redistricting Plans"
- View alternate maps submitted by others by following instructions under "Hawai'i Redistricting Online Application" (you will need to make a free account)
- Submit testimony for or against the plan at a community meeting or the [December 22 commission meeting](#).

**COMING  
SOON**

Dates for upcoming community meetings to be posted to the [Office of Elections website](#).

Check website for a meeting near you and follow instructions on how to participate.

Questions?

Call Office of Elections at 808-453-8683

## Member Spotlight

This month we're helping Democrats to understand how their communities are voting and what that means for the 2022 election. These data sheets were put together by **Davin Aoyagi**, who took the time to sort and compile the information for each of our 35 O'ahu House Districts. Davin is the Secretary for both District 18 and the District 18, Precinct 1. He currently serves as the Chief of Staff to Honolulu City Council Chair Tommy Waters.

**Mahalo for all of your work supporting O'ahu Democrats, Davin!**



**Davin Aoyagi**

## Calendar of Events



## Connect with Tools to Improve Digital Literacy

**[Click here to take the assessment](#)**

**[Click here to get a learner account](#)**

### **DIGITAL LITERACY ASSESSMENT: GIVE IT A TRY!**

Through Ka'ala Souza of the Workforce Development Council, we are able to offer a digital literacy assessment, with a special link just for the O'ahu County Democrats.

**Now, you can also sign up for a free learner account for online training!**







# Windward O'ahu Democrats Native Forest Restoration

Region 9 Windward O'ahu Democrats are joining with Healthy Climate Communities for an afternoon at Hāmākua Marsh on Saturday, December 11. This is a family-friendly service activity and open to all Regions.

## Native Forest Restoration

Saturday, December 11

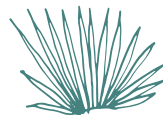
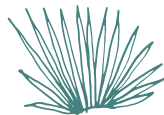
3 - 5 p.m.

Hāmākua Marsh

For more information or to sign up, contact [jma.kagi@gmail.com](mailto:jma.kagi@gmail.com)



In this final part of our three-part native forest restoration series, Healthy Climate Communities will host our Region 9 Democrats (and any other interested O'ahu County Democrats and their friends) at Hāmākua Marsh to participate in native tree planting. Tools and gloves will be provided, but volunteers are required to wear covered shoes and sign a waiver. Sun protection is recommended. Kūpuna and keiki are welcome to participate in this event.



**Healthy Climate Communities**, a 501(c)3 non-profit organization, works in collaboration with Hawaii State Department of Land and Natural Resources (DLNR), local schools and other community groups to restore the watershed for Hāmākua Marsh, called Pu'u o Ehu Hillside. Since 2015, Healthy Climate Communities has planted thousands of native plants, including many endangered and rare native plants such as ko'oloa'ula (*Abutilon menziesii*) and mao hau hele (*Hibiscus brackenridgei*). Caring for native plants is a tough job made possible by installing drip irrigation, using ground cover and the hands of many volunteers.

For more information about Healthy Climate Communities, go to [healthyclimatecommunities.org](https://healthyclimatecommunities.org).





## Help register voters in Pennsylvania.

Trump narrowly won Pennsylvania in 2016, but Biden won in 2020. Incumbent Republican Sen. Patrick Toomey is retiring, so Pennsylvania is essential to electing a Democratic majority in the Senate in 2022. Redistricting will create competitive House districts where we can win.

**CONTACT  
DAVY STRAND**



## Wisconsin is state where Democrats can win.

Hillary Clinton lost Wisconsin in 2016, but Joe Biden won in 2020. Incumbent Trumpian Republican Senator Ron Johnson may or may not run in 2022, but Democrats have a strong chance of picking up this seat. Redistricting will keep at least one House seat up for grabs.

**CONTACT  
DAVY STRAND**



## Bilingual postcard writers needed for Georgia.

Immigrant populations have substantially increased in Georgia where voter registration and turnout will significantly help Senator Raphael Warnock and Georgia's Democratic House Members get re-elected. If you can write bilingual postcards in Hindi, Korean, Vietnamese, Chinese, or Spanish join the O'ahu Dems Bilingual Blue Wave Crew.

**CONTACT  
JIMMY NGUYEN**





## Feedback

What would you like to see? More interviews?  
Discussion of issues? Community resources or info?

This project is a constantly evolving work-in-progress.  
If you'd like us to cover specific content, please let us  
know by email to [oahudemsg@gmail.com](mailto:oahudemsg@gmail.com) or [click here](#)  
for an anonymous feedback form.

## Before You Go ...

We want to stay connected with you!

Whether you can volunteer your time,  
donate funds that allow us to sponsor  
events or just help us by sharing  
content with others, please take a  
minute to check out how you can get  
involved with O'ahu Democrats.

More information available at  
[www.oahudemocrats.org](http://www.oahudemocrats.org)

**Join the Democratic  
Party of Hawai'i**

**Volunteer**

**Donate**



**OahuDemocrats**



**OahuDemocrats**



**OahuDemocrats**



**Oahu County  
Committee - DPH**

PAID FOR BY THE O'AHU COUNTY DEMOCRATS, PO BOX 1793, HONOLULU, HI 96806 NOTICE: This solicitation is made on behalf of the Democratic Party of Hawai'i (DPH) - O'AHU COUNTY COMMITTEE for its non-federal fund. State law requires us to use our best efforts to obtain and report the name, mailing address, occupation and employer of individuals whose contributions aggregate in excess of \$100 for the election cycle. Contributions from individuals and entities to the non-federal fund are limited to \$25,000 per election cycle, combined to the state, county, and local Party committees. Contributions from foreign nationals and contributions made in the name of another are prohibited. Contributions are not tax deductible.