



O'AHU COUNTY DEMOCRATS

OF THE DEMOCRATIC PARTY OF HAWAII

A gathering place for political action

GEARING UP FOR ELECTION SEASON: SUPPORT DEMOCRATS UP & DOWN THE TICKET



It's an election year and we are so excited to help get our federal, state, and county Democrats elected into office to serve! Starting this month, we'll share resources on how you can:

- Meet and connect with Democrats running for office
- Show your support for local and national Democrats
- Support key races in other states to help stabilize Congress

Who Are Our 2024 Democratic Candidates?

June 4, 2024 was the last day to file to run for elected office in the State of Hawai'i. If you are interested in learning more about the Democrats who will be on O'ahu ballots this fall, we've compiled the full slate of those running in partisan races.

**[View All
Candidates](#)**

Check out their websites or contact them directly to find out what they're about and join up with a campaign to help get them across the finish line.



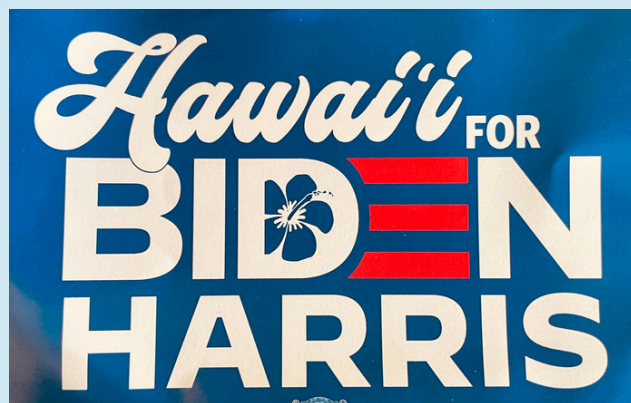
PRIMARY ELECTION
AUGUST 10, 2024

GENERAL ELECTION
NOVEMBER 5, 2024

Biden–Harris Signs and Stickers Available

Show your aloha for the Biden-Harris campaign. Shipment of signs and stickers now available. First come, first served. While supplies last.

Email requests to Susan Young at sssy@hawaii.rr.com



O'ahu Dems Blue Wave Crew Continues



O'ahu Dems Blue Wave is targeting for victory! In addition to sending hundreds of postcards to key states every month, they are targeting Pennsylvania's CD 10 for a 3-fer win in November.

Knock on doors in October with O'ahu Dems Blue Waver Roger Davis in his hometown district for Biden-Harris, Senator Bob Casey and Democratic challenger Janelle Stelson in PA CD10. See flyer on Page 4.

JOIN O'AHU DEMS AT THE KAILUA 4TH OF JULY PARADE

Our O'ahu Democrats will be participating in the Kailua 4th of July Parade! We'll have a 32-passenger trolley decorated with Biden-Harris and O'ahu Democrats banners and signs.

Participants may ride or walk alongside, in front of, or behind the trolley. Bring your Democratic friends to join the fun! Deck yourself out with Democratic Party and Biden/Harris-wear. Bring a flag, your union sign for Biden, or a homemade sign that speaks to your commitment to our President. (Please no shirts and signs for candidates running for other elected offices.)

Let's enthusiastically show Kailua, O'ahu, and the State of Hawai'i that support for Biden-Harris runs wide and deep. Additional info on Page 5.



PARADE SCHEDULE

- 8:30 a.m.** Trolley decorating at Kainalu Elementary School
- 9:30 a.m.** All participants riding and walking meet at staging area
- 10 a.m.** Parade starts
- 12 p.m.** Parade ends at Kailua Intermediate School
Trolley will return participants to Kainalu Elementary School at the end of the parade

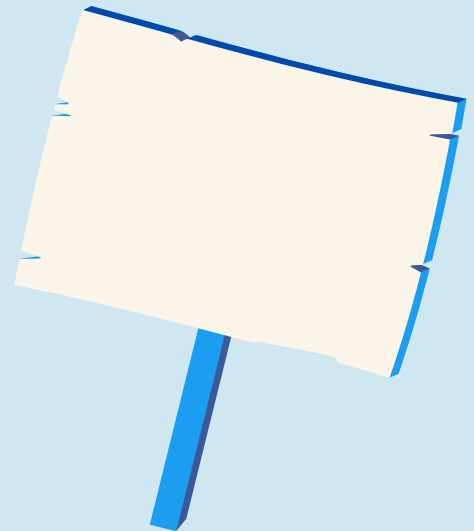
RSVP to Susan Young at
sssy@hawaii.rr.com or
(808) 256-6182 for more info.

CAMPAIGN SIGN & SIGN WAVING RULES

Whether you are a candidate for elected office, running a campaign or volunteering to help out on one, please keep in mind that Hawai'i and the City & County of Honolulu have strict laws that were created to help us limit sprawl in our public spaces.

It is **ILLEGAL** to post signs:

- In the public right-of-way, including curbstone, lamppost, utility pole, streetlight pole, hydrant, bridge, tree, street sign, traffic sign, or traffic light that is on public property.
- Within the right-of-way along any state or federal highway, including overpasses, fencing, sign posts, and poles.
- Within any street right-of-way, including any sidewalk area or median strip
- In any public mall area
- On any private property unless the property owner, holder, lessee, agent, or trustee has given explicit written or oral permission



It is **ILLEGAL** to sign wave:

- From an overpass above state highways or freeways

Other sign waving etiquette:

- Campaign supporters should use caution when sign waving, especially off busy highways and major streets.
- Do not park in prohibited areas.
- Be extremely cautious when exiting and reentering traffic from sign waving spots.



MAKE REPORTS ON PROBLEM SIGNS OR SIGN WAVING

Signs on State Highways or Freeways
Department of Transportation
(808) 831-6714
complainthighwayoahu@hawaii.gov

Signs on in Public Right-of-Way
Department of Planning & Permitting
[Click here for online form](#)
For category, select "Other Enforcement Item"

Unsafe sign waving
HPD via 911

**Aiming for a "3-fer"
in PA's CD-10!**

VICTORY IN PA FOR

BIDEN/HARRIS

SENATOR BOB CASEY

JANELLE STELSON

CD10



WHY PENNSYLVANIA? WHY CD-10?

O'ahu Democrats Blue Wave, as part of its ongoing effort to impact critical elections in mainland battleground states which affect the entire nation, is planning a heightened campaign focus on Pennsylvania this summer and fall. PA has more electoral votes (19) than any of the other Blue Wall battlegrounds critical to President Biden's re-election.

It also has a tight US Senate race which must be won by Democratic incumbent Bob Casey to maintain Senate control. Furthermore, PA's CD-10 US House race presents a great opportunity to unseat toxic MAGAphile Scott Perry, a former leader of the far-right Freedom Caucus and pro-active peddler of the 2020 Big Lie.

Democratic challenger Janelle Stelson, a long-time local news anchor with high name recognition, is currently within the polling margin of error to win that seat.

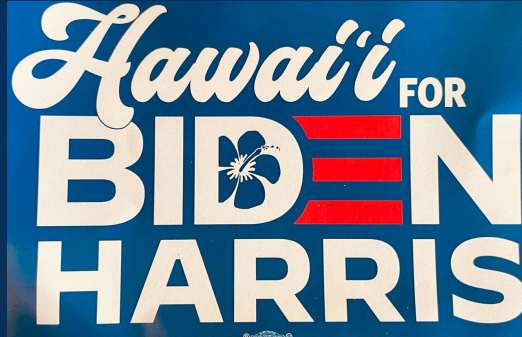
We are working with Biden campaign organizers in CD-10 to come up with a potential range of activities for Blue Wavers to undertake, ranging from remote voter outreach hopefully beginning soon all the way to in-person campaigning on the ground in PA during October. This south-central PA district includes the cities of York and Harrisburg and is within a two hour drive of Philadelphia, Baltimore and Washington for any kama'aina who'd like to visit the actual roots of our democracy's past while fighting to preserve its future.

**INTERESTED? GET ON BOARD TO DO WORK AT HOME THIS SUMMER
AND/OR ON THE GROUND IN PA CD-10 IN OCTOBER!**

CONTACT DAVY STRAND: dnstrand@gmail.com

ROGER DAVIS rbdavis808@gmail.com

4th of July



**Celebrate Biden/Harris, our National Delegates to the
DNC Convention & Democratic Victory in 2024!**

**JOIN O'AHU DEMS FROM AROUND THE
ISLAND FOR THE KAILUA PARADE!
THURSDAY, JULY 4, 2024**

**Contact Susan Young sssy@hawaii.rr.com if you plan to join us,
so we can keep you informed.**

**8 :30 AM: Park at or near Kainalu Elementary School, 165 Kaiholu
St., Kailua. Look for the O'ahu Dems trolley contingent. Help
decorate the trolley.**

9:30 AM: Be at the staging area/street assigned to O'ahu Dems.

10:00 AM: The parade begins. You can walk or ride the trolley.

**12:00 PM: The parade ends at Kailua Intermediate School. If you
wish, the trolley will return you to Kainalu Elementary School.**

Join the Parade!

PAID FOR BY O'AHU COUNTY DEMOCRATS, PO BOX 1793, HONOLULU, HI 96806