



O'AHU COUNTY DEMOCRATS

OF THE DEMOCRATIC PARTY OF HAWAII

A gathering place for political action

Aloha O'ahu Democrats!

As we begin the new year, let us remember that January 6, 2024 marked the 3rd anniversary of the assault on the U.S. Capitol by a vicious armed mob set on disrupting a joint session of Congress that was scheduled to affirm the 2020 presidential election results. This was a direct attack on American democracy and the rule of law.

It is unbelievable that Donald Trump, the alleged perpetrator of the attack, currently stands as the probable Republican nominee for president. Yet he does, and we must be vigilant and aggressive in preventing him and those who support him from succeeding in 2024.

Although we live thousands of miles away from our nation's capitol, each of us can do our bit to preserve our precious democracy:

- Join the **O'ahu Dems Blue Wave** postcard writing crew! We have thousands of beautiful "Aloha from Hawai'i" postcards for vital voter registration efforts in key states. (See Page 9 for how you can get involved!)
- Be an active member of your local **Democratic District Council** and a delegate to your county and state conventions. Elections will be held on March 6, 6 pm at sites around the island.
- Help a Democratic candidate in your community - or run for office yourself! Our **Organizing for Elections 2024** team can help you.
- Join an **O'ahu Dems activity**. We have service projects, parade contingents, FUNdraising parties, legislative priorities discussions, or campaign rallies to spread visibility and activism around the island.
- Actively **engage with your local, state, and federal Democratic elected officials** so they listen to your concerns and stand firm in protecting our American democracy

Pledge to be politically active in 2024! Our democracy depends on it.

Lorna is sporting our new Oahu Dems T-shirt and they're still for sale!

Info on Page 6 of the newsletter.

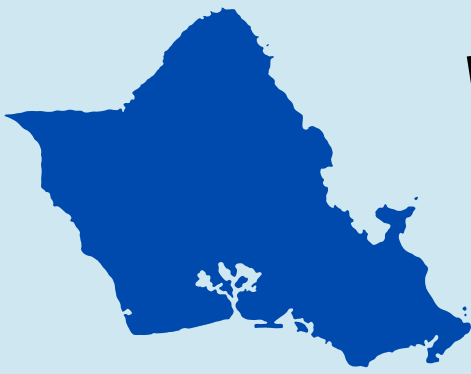
Mahalo,

**Lorna Takehara Strand
O'ahu Democrats Chair**



WHAT YOU NEED TO KNOW ABOUT 2024 BIENNIAL ELECTIONS

On March 6, 2024 at 6 p.m. all districts will meet for the Biennial Elections. We hope you will join fellow Democrats from your district and choose to run for a seat on your local District Council as well as become a delegate to this year's County and State Conventions.



Who:

All O'ahu Democrats. If you know someone who wants to participate and join the Democratic Party, it's easy to join! Interested individuals need to:

- Be a registered voter in the State of Hawai'i
[Click here for voter registration information](#)
- Sign up with the Democratic Party of Hawai'i
[Click here for DPH membership form](#)



When:

Wednesday, March 6, 2024 at 6 p.m.

Why:

Each district will come together to do 3 things: 1) Elect a District Council; 2) Elect delegates to the County Convention on April 20; 3) Elect delegates to the State Convention on May 18 & 19.



District Councils

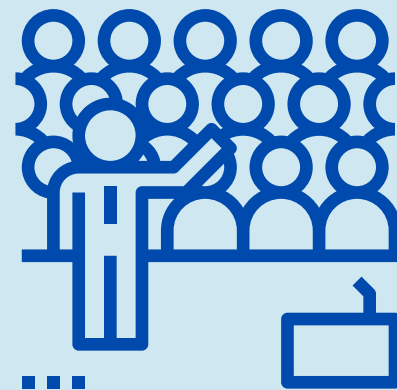
Each District Council will elect a Chair, Vice Chair, Treasurer, and Secretary as well as 11 Directors. (If 15 positions are filled, 2 additional Vice Chairs and 1 additional Secretary may also be elected.)

County Convention Delegates

All members of the District Council will become automatic delegates to the County Convention. Each District can also elect an additional 10 delegates.

State Convention Delegates

Each Precinct in a District has an allocated number of delegates based on voter turnout in the 2022 General Election. Your meeting's presiding officer will have this information available. Precinct delegate counts will be available soon at www.oahudemocrats.org



Where:

Districts 18 & 19

ʻĀina Haina Elem. Cafeteria
801 W. Hind Drive

Districts 20, 21, 23 & 24

Kaimuki High Cafeteria
2705 Kaimuki Avenue

District 22, 26 & 27

Stevenson Middle Cafeteria
1202 Prospect Street

Districts 25

McKinley High Library
1039 S. King Street

Districts 28, 29, 30

Farrington High Cafeteria
1564 N. King Street

District 31

Moanalua High Student Center
2825 Ala Lima Street

Districts 32 & 33

ʻĀiea Public Library
99-374 Pohai Place

Districts 34, 35, 36 & 39

Waipahu High Cafeteria
94-1211 Farrington Highway

Districts 37 & 38

Mililani High Cafeteria
95-1200 Meheula Parkway

Districts 40 & 41

ʻEwa Beach Public Library
91-950 North Road

District 42

Operating Engineers Local 3
2181 Lauwiliwili Street

District 43

Makakilo Community Rec Center
92-1121 Makakilo Drive

District 44

Nānākuli Public Library
89-070 Farrington Highway

District 45

Waifānae Public Library
85-625 Farrington Library

District 46

Wahiawā Park, Hale Koa Room
1139 Kilani Avenue

District 47

Hauʻula Comm. Assn. Center
54-010 Kukuna Road

District 48

KEY Project, Room 105
47-200 Waihee Road

Districts 49 & 50

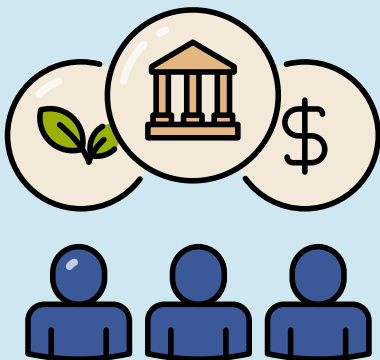
Castle High Cafeteria
45-386 Kāneʻohe Bay Drive

District 51

Waimanalo Public Library
41-1320 Kalanianaʻole Highway

While we encourage everyone to attend in-person for a fun night of comradery, Zoom options will also be available. Zoom registration will be posted on www.oahudemocrats.org

GET INVOLVED IN THE 2024 LEGISLATIVE SESSION



The Legislature will convene for Opening Day on January 17, 2024. We hope you will devote some time to participating in the legislative process to track bills, submit testimony on measures that impact our communities, and work with our elected officials to make Hawaiʻi a better place to live. Here are some resources to get you started.

Legislative Priorities Report Finalized

A big mahalo to everyone who took this year's Legislative Priorities Survey or came to talk story about the many ideas on how to improve O'ahu at the regional survey meetings! The Legislation Committee compiled all of the data and discussion into a report that was sent to our O'ahu elected officials at the Legislature and the Honolulu City Council.

We encourage you to use this report as a starting point to talk with your area councilperson, representative, and senator about issues that you care about.

[**Click Here to View Report**](#)



In case you missed it, here is the Legislation Committee video on the legislative process and session overview that was shown at each of the region meetings last year.

[**Click Here to View Video**](#)



Learn About the Legislative Process

The Digital Equity Committee would like to share a series of training opportunities to learn about the Legislative Session and the many free tools available to you. The Public Access Room has options through January 2024 to help get you set up and ready to participate in committee hearings.

Use Your Voice at the Legislature

- Weds, January 10, 3 p.m.
- Thurs, January 18, 6 p.m.

Getting to Know the Legislature's Website

- Thurs, January 11, 6 p.m.
- Tues, January 16, 12 p.m.

Legislative Calendar and Deadlines

- Tues, January 9, 12 p.m.
- Thurs, January 18, 3 p.m.

All trainings will be held via Zoom. Registration is required.

[**Click Here for Info & Sign-up**](#)



ORGANIZING FOR ELECTIONS 2024 GUIDES FOR CANDIDATES

Whether you're thinking about running for office in 2024 or trying to help an inspiring Democrat with their campaign, the Organizing for Elections 2024 team is here to help! They've put together a helpful guide with everything to get a campaign committee created to helpful tips on running during the hectic election cycle. Let's get Democrats into our elected seats up and down the ballot this year!

To request [*Running to Win! A Guide for Candidates*](#) please email Susan Young at sssy@hawaii.rr.com



BEFORE YOU GO...

Stay in touch with us! Whether you're looking for an opportunity to get involved or want to sponsor a project with fellow Democrats, we're here to help you! Let us know at oahudems@gmail.com

Volunteer



OahuDemocrats

Donate



OahuDemocrats

**Join the Democratic
Party of Hawai'i**



OahuDemocrats



**Oahu County
Committee - DPH**

PAID FOR BY THE O'AHU COUNTY DEMOCRATS, PO BOX 1793, HONOLULU, HI 96806 NOTICE: This solicitation is made on behalf of the Democratic Party of Hawai'i (DPH) - O'AHU COUNTY COMMITTEE for its non-federal fund. State law requires us to use our best efforts to obtain and report the name, mailing address, occupation and employer of individuals whose contributions aggregate in excess of \$100 for the election cycle. Contributions from individuals and entities to the non-federal fund are limited to \$25,000 per election cycle, combined to the state, county, and local Party committees. Contributions from foreign nationals and contributions made in the name of another are prohibited. Contributions are not tax deductible.