

O'AHU COUNTY DEMOCRATS

OF THE
DEMOCRATIC PARTY OF HAWAII

a gathering place for political action

JOIN US AS A DELEGATE TO OUR 2022 STATE AND COUNTY CONVENTIONS

Oahu Democrats are currently gearing up for our O'ahu County Convention on March 19, 2022 and the State Convention on May 27-29, 2022. If you'd like to join us, we are selecting delegates at District and Precinct meetings via Zoom that will happen later this month. To join your meeting, you must **register by January 17, 2022**.

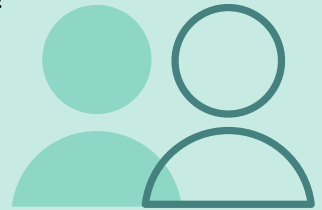
Register for Meetings

Who?

YOU - and anyone you know who is interested in getting involved!

Anyone can come out to be a delegate if they:

1. Are a registered voter in Hawai'i
2. Are a registered member of the Democratic Party
3. Sign-up to attend your District/Precinct meeting



What?

As **PRECINCTS**, you will fill any vacant officer positions and elect delegates to the State Convention.

As **DISTRICTS**, you will fill any vacant positions. Current officers or at-large delegates and new officers or at-large will be delegates to the County Convention.



When?

Districts 17, 18, 19
Jan. 23, 2pm

Districts 31, 33, 34, 35
Jan 25, 6pm

Districts 48, 49, 50, 51
Jan. 26, 7pm

Districts 20, 21, 22, 23
Jan. 29, 10am

Districts 36, 37, 45, 46, 47
Jan. 29, 4pm

Districts 24, 25, 26, 27, 29
Jan. 29, 2pm

Districts 38, 39, 40, 41
Jan. 25, 7pm

Districts 28, 30, 32
Jan. 23, 4pm

Districts 42, 43, 44
Feb. 2, 6:30pm

**Not sure what
District you live
in? Check the
sidebar on this
email!**



Why?

Becoming a delegate to the State or County Conventions allow you to have a voice in the important decisions we are making for the following year.

At the State Convention we'll be:

- Electing a new State Chairperson and representatives to the State Central Committee
- Updating our Platform and Rules
- Passing Resolutions about local, state, national, and international initiatives

At the County Convention, we will vote on O'ahu's priorities for Platform, Rules, and Resolutions to send to the State Convention.

O'AHU COUNTY CONVENTION NOTICE

As outlined by O'ahu County Democrats' Section 12 bylaws, the Oahu County Convention will be held on March 19, 2022 from 8 am - 3pm via Zoom.

If you are interested in becoming a delegate to the O'ahu County Convention, follow the instructions in this newsletter to register for your District/Precinct meeting.



Care & Serve Project Recaps

O'ahu Democrats Care & Serve is a series of education and service events aimed at building our connections with each other and strengthening our communities.

WINDWARD O'AHU DEMOCRATS NATIVE FOREST RESTORATION

Hosted by Healthy Climate Communities
Sponsored by Region 9

In the final part of our three-part native forest restoration series, Healthy Climate Communities hosted our Region 9 Democrats and fellow O'ahu County Democrats on Saturday, December 11 at Hāmākua Marsh to participate in native tree planting.

Our wonderful Democratic Party volunteers spent their Saturday afternoon planting native tree saplings at Hāmākua Marsh. Under the guidance of Dr. Lisa Marten (Healthy Climate Communities Director), participants planted saplings on the cleared hillside while learning about the ongoing native forest restoration effort in Windward O'ahu.



Left to right: Dr. Lisa Marten (Healthy Climate Communities Director), Betty Vega, Jim Vega, Justin Akagi, Christopher Edwards, Lorna Strand, David Strand, Connie Choy, Zachary Stoddard

Although our three-part native forest restoration series is complete, anyone interested in environmental stewardship is encouraged to visit Hāmākua Marsh on any Monday between 4-6 PM to help Healthy Climate Communities with their weekly cleanup efforts.

Please also be on the lookout for future native forest restoration efforts, in coordination with the OCC Tree Committee (Chair: Christopher Edwards).



Christopher Edwards



Betty Vega



Connie Choy



In case you missed it, the recording of the Pacific Law Institute webinar *How the Hawaii Legislative 2022 Session will be Conducted* is now available online.

[Click here to watch video](#)



The Public Access Room of the Legislative Reference Bureau has scheduled more sessions to help with legislative advocacy:

- “Your Voice”: Tuesday, January 11, 5 pm. Overview of the legislature and how to add your voice to the process
- “The Bill to Law Process”: Wednesday, January 19, 5 pm. Walk through the process with an imaginary bill
- “Finding Bills”: Wednesday, January 26, 5 pm. Using the legislature’s website to find bills you’re interested in
- “Understanding the Deadlines”: Wednesday, February 2, 5 pm. Following the legislative calendar of deadlines

You can sign up for any of the Public Access Room’s (PAR’s) Zoom workshops by emailing par@capitol.hawaii.gov or calling (808) 587-0478.



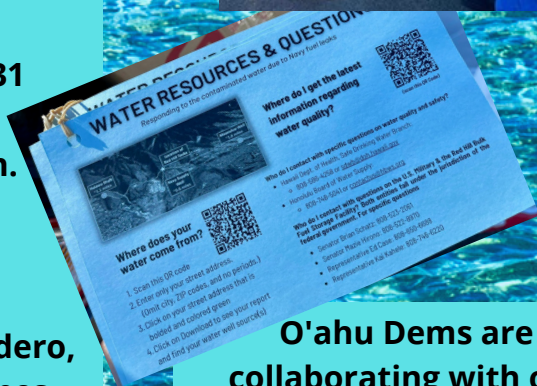
RED HILL WATER TANKS EMERGENCY

Region 5 District 31

Democrats took
immediate action.

Partnering with
Rep. Johanson,
Senator Wakai,

Council Member Cordero,
they canvassed homes
nearby Red Hill with
helpful information.



**O'ahu Dems are
collaborating with our
Congressional Delegation,
local elected officials, and
the Bd. of Water Supply to
provide productive activism
to maintain water purity
and conservation through
this emergency period
and beyond.**

Contact Lorna Strand
lorna.strand@gmail.com
if you want to lend a hand.



Let's Talk Story O'ahu Democrats!

Hawai'i 2050 Sustainability Plan

Charting a Course for the Decade of Action
(2020-2030)

Wednesday, January 12, 2022, 6 PM

Zoom registration link:

<https://us02web.zoom.us/join/9tZ0pce2hrz0vGdduajMsiN7yVE2v9wFKd0Er>

and on O'ahu Dems Facebook Live

Climate change, zero hunger,
clean water & sanitation,
life on land & below water,
quality education, gender
equality, and many more goals
are addressed with bold action.

Join guest Danielle Bass &
O'ahu Dems Region 6 Chair Michael
Chapman for this exciting and
important talk story.



DANIELLE BASS
State Sustainability Coordinator
State of Hawai'i Office of Planning
and Sustainable Development



We cannot serve alone.

The Hawaii NAACP invites you to honor Dr. King's legacy with service.

Everybody can be great ... because anybody can serve.

You don't have to have a college degree to serve.

You don't have to make your subject and verb agree to serve.

You only need a heart full of grace. A soul generated by love.

Dr. Martin Luther King

"With a heart full of grace" please donate to:

THE HAWAII FOODBANK: non-perishable food

THE MA'I MOVEMENT: period & hygiene products

MARTIN LUTHER KING DAY

MONDAY, JANUARY 17, 2022 9 AM - 3 PM

DRIVE-BY AND DROP-OFF AT THESE LOCATIONS:

**HONPA HONGWANJI HAWAII BETSUIN BUDDHIST TEMPLE
& PACIFIC BUDDHIST ACADEMY CAMPUS**

Entrance at 1754 Lusitana St., Honolulu 96813

AIEA HONGWANJI MISSION

99-186 Puakala St., Aiea, HI 96701

WINDWARD BUDDHIST TEMPLE

268A Kuulei Rd., Kailua 96734 (Entrance next to 7-11 Store)

If you cannot contribute items at the drop-off locations but can donate funds, please go to these links.

Feel free to note "MLK Day of Service" on your donation.

THE HAWAII FOODBANK: <https://hawaiifoodbank.org/donate>



THE MA'I MOVEMENT: <https://maimovement.org/donate>



The Hawaii NAACP extends a heart full of gratitude to the following
Co-Sponsors of this day of service to benefit the Hawaii Foodbank
& the Ma'i Movement in honor of Dr. King's legacy.

MAHALO!

Honpa Hongwanji Mission of Hawaii
Honpa Hongwanji Hawaii Betsuin Buddhist Temple
The Pacific Buddhist Academy
Aiea Hongwanji Mission
Windward Buddhist Temple
The African American Attorneys Association
Sisters Empowering Hawaii
Oahu Democrats Care & Serve Program
Campbell High School Girls Empowerment Movement Club
Prince Hall Shriners Desert of Hawaii
Prince Hall Grand Lodge of Hawaii
Alpha Phi Alpha Fraternity, Inc. Mu Beta Lambda Chapter
Blacks In Government Pacific Ocean Chapter

Sponsored by the Hawaii NAACP

For information contact Alphonso Braggs Naacphawaii@gmail.com



Feedback

What would you like to see? More interviews?
Discussion of issues? Community resources or info?

This project is a constantly evolving work-in-progress.
If you'd like us to cover specific content, please let us
know by email to oahudemsg@gmail.com or [click here](#)
for an anonymous feedback form.

Before You Go ...

We want to stay connected with you!

Whether you can volunteer your time,
donate funds that allow us to sponsor
events or just help us by sharing
content with others, please take a
minute to check out how you can get
involved with O'ahu Democrats.

More information available at
www.oahudemocrats.org

**Join the Democratic
Party of Hawai'i**

Volunteer

Donate



OahuDemocrats



OahuDemocrats



OahuDemocrats



**Oahu County
Committee - DPH**

PAID FOR BY THE O'AHU COUNTY DEMOCRATS, PO BOX 1793, HONOLULU, HI 96806 NOTICE: This solicitation is made on behalf of the Democratic Party of Hawai'i (DPH) - O'AHU COUNTY COMMITTEE for its non-federal fund. State law requires us to use our best efforts to obtain and report the name, mailing address, occupation and employer of individuals whose contributions aggregate in excess of \$100 for the election cycle. Contributions from individuals and entities to the non-federal fund are limited to \$25,000 per election cycle, combined to the state, county, and local Party committees. Contributions from foreign nationals and contributions made in the name of another are prohibited. Contributions are not tax deductible.