

# O'AHU COUNTY DEMOCRATS

OF THE  
DEMOCRATIC PARTY OF HAWAII

*a gathering place for political action*

## A Holiday Message from Lorna

As we move quickly into the holiday season, please join me in recognizing the tremendous gifts of service and care that Democrats in every part of our beautiful island have given to our communities and Party this year.

Your O'ahu County Council has done a terrific job in moving our Party forward. Please join me in thanking our Precinct, District, Region, County Officers and grassroots volunteers for their creative, compassionate, and effective work on behalf of our Party.

In the most trying of times, O'ahu Democrats have gathered together to:

- Teach and support members who require access to broadband services, including the O'ahu Dems' Zoom account

- Initiate O'ahu Dems Care & Serve projects to support our communities
- Produce several "Let's Talk Story" online educational and celebratory events
- Develop a comprehensive Legislative Priorities Report that covers islandwide interests and concerns
- Build a dynamic O'ahu Dems Blue Wave effort with voter registration postcards and texts to key states for victory in 2022
- Establish a focused Affirmative Action, Inclusion & Diversity Plan
- Evaluate the Party's Constitution and Bylaws to prepare us for the future
- Inform everyone of what's happening through a monthly newsletter



2022 promises to be a vigorous, productive, and exciting year for Democrats on our island, in our state, and throughout our nation. I look forward to our vigorous work together in the new year!

With fond Aloha,

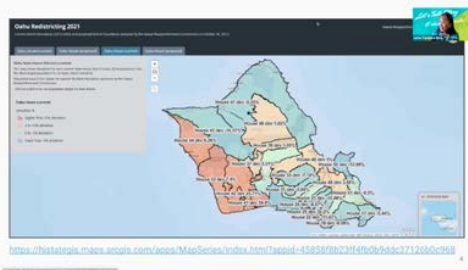
Lorna Takehara Strand  
Chair  
O'ahu County Democrats

# Share Input on New State District Lines

The Reapportionment Commission will be hosting a series of meetings on O‘ahu to get feedback on proposed plans to redraw Congressional, Senate, and House district lines. These December meetings will shape the next version of the district maps and what the communities we vote in will look like for the next 10 years.

## What's been happening with reapportionment?

If you're unfamiliar with what has been going on so far, watch a short video to catch you up on the process.



**[Click here to watch video](#)**

## How can you participate?

1) [Click here to view the current proposed maps](#) under "Legislative Redistricting Plans." Check both the maps proposed by the commission and by members of the public!

2) Attend a public meeting with the commissioners to provide feedback. Submit full name and written testimony to [reapportionment@hawaii.gov](mailto:reapportionment@hawaii.gov)

- **East Honolulu** - December 4, 2021, 2 p.m.
  - [Click here for Zoom link](#). Meeting ID: 922 1555 0485
- **Central O‘ahu** - December 8, 2021, 6:30 p.m.
  - [Click here for Zoom link](#). Meeting ID: 922 9134 2227
- **Leeward O‘ahu** - December 9, 2021, 6:30 p.m.
  - [Click here for Zoom link](#). Meeting ID: 933 1591 2708
- **Windward O‘ahu** - December 10, 2021, 6:30 p.m.
  - [Click here for Zoom link](#). Meeting ID: 987 4809 9224

## Are there other ways to participate if you can't make the meeting for your area?

The public can also participate in the next Reapportionment Commission's meeting on December 22, 2021 at 1 p.m. Submit full name and testimony to [reapportionment@hawaii.gov](mailto:reapportionment@hawaii.gov)

[Click here for the Zoom link](#). Meeting ID: 982 1510 7876



## Windward O'ahu Democrats Native Forest Restoration

Region 9 Windward O'ahu Democrats are joining with Healthy Climate Communities for an afternoon at Hāmākua Marsh on Saturday, December 11. This is a family-friendly service activity and open to all Regions.

**Native Forest Restoration**  
**Saturday, December 11**  
**3 - 5 p.m.**  
**Hāmākua Marsh**  
For more information or to sign up, contact  
[jma.kagi@gmail.com](mailto:jma.kagi@gmail.com)



## Online Resources for the Upcoming Legislative Session

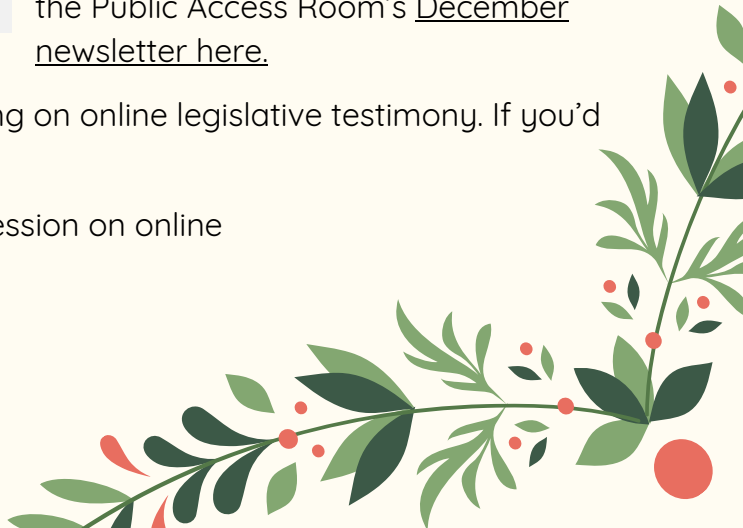


1) If you missed the live sessions from the Legislative Reference Bureau Public Access Room about preparing for Session, you can see the [recordings online here](#).

2) For more resources, you can also review the Public Access Room's [December newsletter here](#).

3) The Digital Equity Committee also held its own training on online legislative testimony. If you'd like to view it, you can [view it at online here](#).

4) Finally, keep an eye out in January for a follow-up session on online legislative testimony for the 2022 legislative session!







# Help register potential Democratic voters in key competitive states

Arizona added as Blue Wave target. Incumbent Senator Mark Kelly faces serious Republican challenge, endangering Democratic control of the Senate.

[CLICK HERE TO CONTACT DAVY STRAND](#)



Help register voters in Pennsylvania. Incumbent Republican Senator Patrick Toomey is retiring, so Pennsylvania is essential to elect a Democratic Senate majority in 2022.

[CLICK HERE TO CONTACT DAVY STRAND](#)

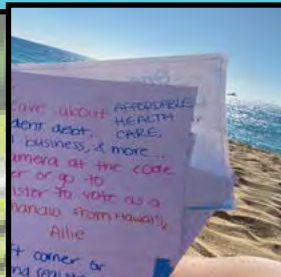
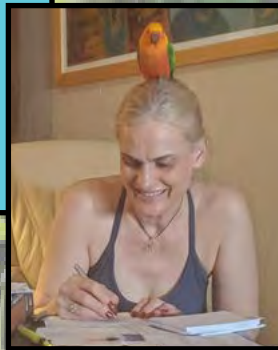


Wisconsin is state where Democrats can win. Incumbent Trumpian Senator Ron Johnson may or may not run in 2022. Democrats have a strong chance of picking up this seat.

[CLICK HERE TO CONTACT DAVY STRAND](#)

Bilingual postcard writers needed for Georgia. Immigrant populations are dramatically expanding in Georgia. If you can write bilingual postcards in Hindi, Korean, Vietnamese, Chinese or Spanish, you can help Senator Raphael Warnock retain his seat.

[CLICK HERE TO CONTACT JIMMY NGUYEN](#)





## Before You Go ...

We want to stay connected with you!

Whether you can volunteer your time, donate funds that allow us to sponsor events or just help us by sharing content with others, please take a minute to check out how you can get involved with O'ahu Democrats.

More information available at [www.oahudemocrats.org](http://www.oahudemocrats.org)

**Join the Democratic  
Party of Hawai'i**

**Volunteer**

**Donate**



**OahuDemocrats**



**OahuDemocrats**



**OahuDemocrats**



**Oahu County  
Committee - DPH**

PAID FOR BY THE O'AHU COUNTY DEMOCRATS, PO BOX 1793, HONOLULU, HI 96806 NOTICE: This solicitation is made on behalf of the Democratic Party of Hawai'i (DPH) - O'AHU COUNTY COMMITTEE for its non-federal fund. State law requires us to use our best efforts to obtain and report the name, mailing address, occupation and employer of individuals whose contributions aggregate in excess of \$100 for the election cycle. Contributions from individuals and entities to the non-federal fund are limited to \$25,000 per election cycle, combined to the state, county, and local Party committees. Contributions from foreign nationals and contributions made in the name of another are prohibited. Contributions are not tax deductible.

